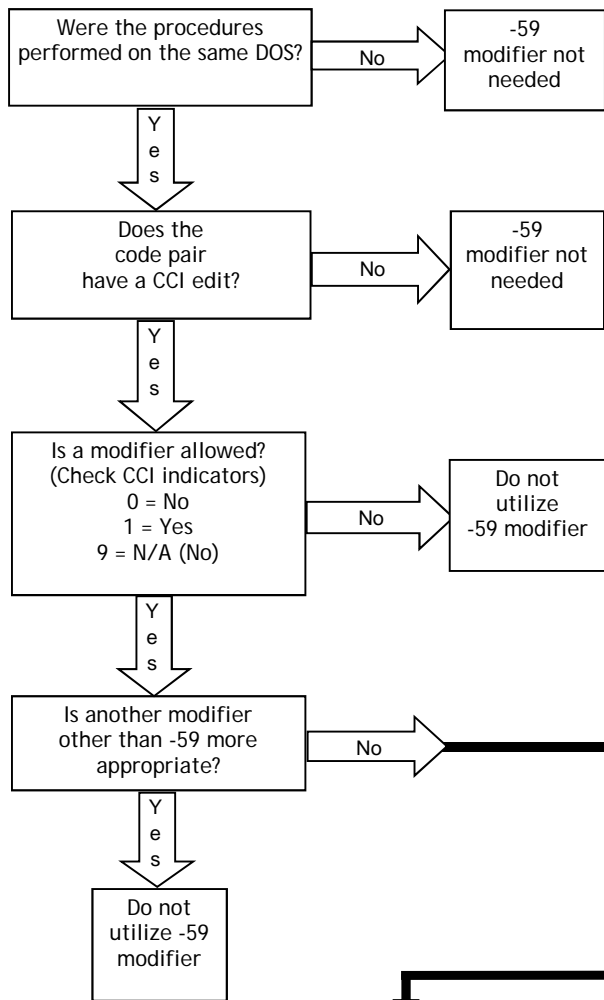


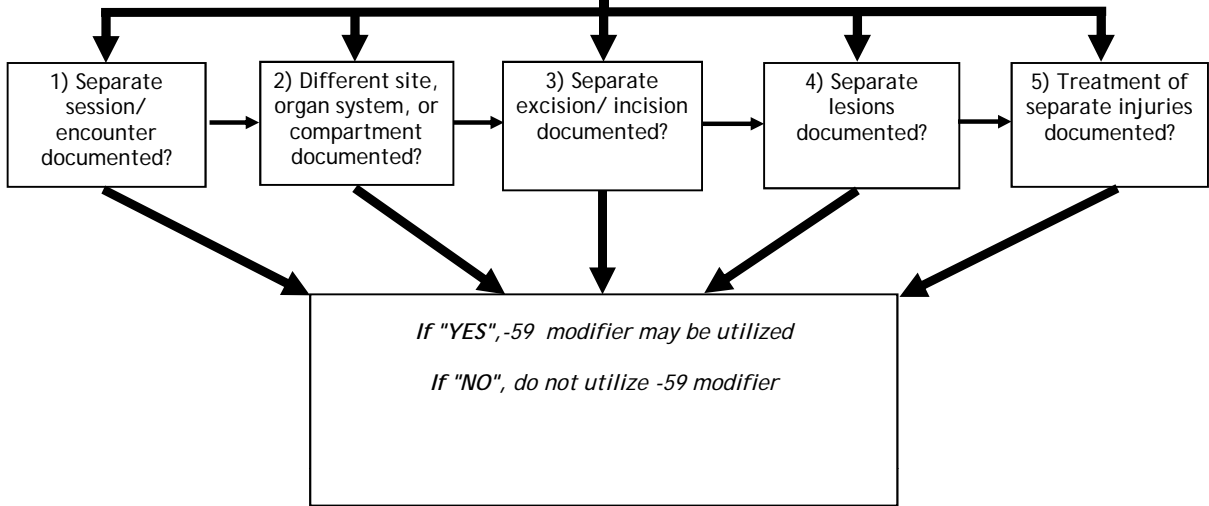
Modifier - 59 Decision Tree



Modifier -59 Distinct Procedural Service:
 Under certain circumstances the physician may need to indicate that a procedure or service was distinct or independent from other services performed on same DOS

Modifier -59 Quick Tips

- Use only when there is no other CCI modifier that best explains circumstances.
- Always attach the -59 to the lesser (component) code.
- Do not use with E/M Codes.
- Do not use with 77427.
- For cytopathology use only if tests performed on different specimens.
- For physical therapy codes, only appropriate when procedures are performed during distinct 15 minute intervals. -59 should not be used when procedures are performed as part of same 15 minutes.



Created by:
 Stacie L. Buck, RHIA, CCS-P, LHRM, RCC, CIC



